

USACE INUNDATION MAP POLICY AND IMPLEMENTATION UPDATE EC 1110-2-6075

Jason Sheeley

For Nevada Dam Safety & Emergency Action Plan Workshop

26 August 2020

"The views, opinions and findings contained in this report are those of the authors(s) and should not be construed as an official Department of the Army position, policy or decision, unless so designated by other official documentation."



**US Army Corps
of Engineers**



ENGINEER CIRCULAR (EC) 1110-2-6075

INUNDATION MAPS AND EMERGENCY ACTION PLANS

The EC should publish in AUG/SEP 2020

Inundation Maps

- **Shared with public**
 - Provides for security exemption
- Scope – USACE produced maps, most programs
 - Excludes feasibility studies, continuing authorities program
- Authoritative sources
 - USACE flood inundation map (FIM) database
 - National Inventory of Dams / National Levee Database
 - Access to Water Resources

Emergency Action Plans (EAPs)

- Scope - USACE operated and maintained dams and levees
- EAP maps shared with emergency managers, other agencies and the public via National Inventory of Dams
- Minimal change from 2018 EC 1110-2-6074

INUNDATION MAPS - IMPLEMENTATION TIMELINE

Immediate – Districts share EAP maps and flood event maps

OCT '20 – Policy rollout webinars

National Inventory of Dams (NID) USACE-only

Flood Inundation Mapping Standard Operating Procedures (FIM SOP) update published

Implementation webinars/training

Publish maps to USACE FIM database

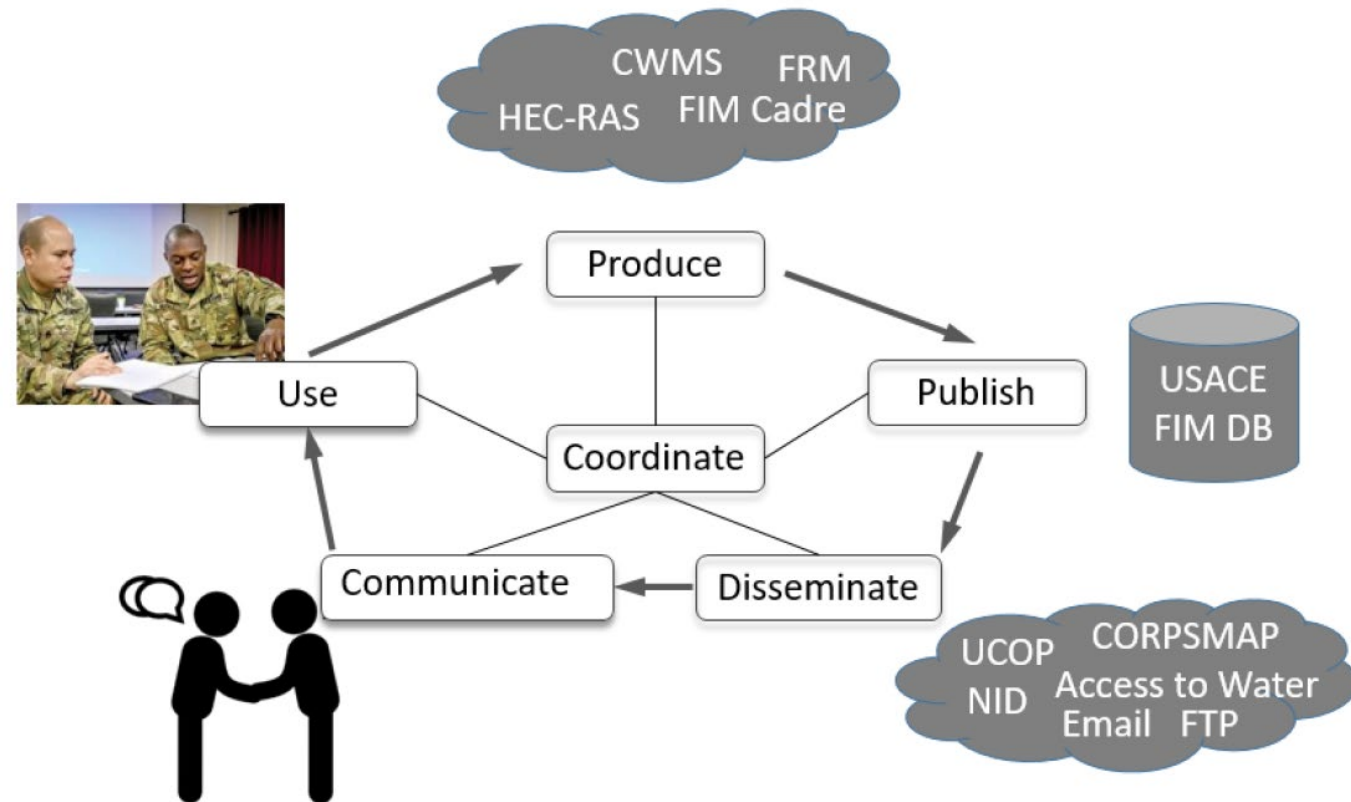
NOV '21 – NID & Access to Water Resources public rollout

IMPLEMENTATION – FIM SOP OVERVIEW

Intent – local production by staff with knowledge of basins & projects

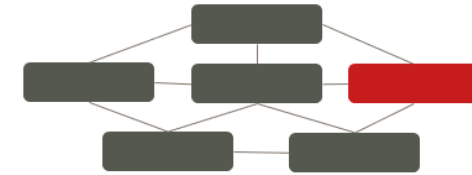
- Clear lines of responsibility
- Consistent standards
- Tiered capability to facilitate timely response during flood incidents
- Consistent processes used throughout USACE

Concept of Operations



INUNDATION MAP PUBLISHING

<https://fim.sec.usace.army.mil/uploader/>



USACE Inundation Upload

Submission Overview

SUBMIT

Library

Library Information
Create New Library?
No
Select Library Type
CWMS
Dam Study
FEMA
Flood Fight
Levee Study
Rapid Response Inundation Mapping
Silver Jackets

Library Information
Create New Library?
No
Select Library Type
Flood Fight
Select Library
ID: 4084 Name: Hurricane Harvey
ID: 4229 Name: Hurricane Maria

Flood Fight Response

Select Flood Fight Response Record *
Create New

Object Meta
Data:
Attribute
Value
+

Select District *
Kansas City

Basin

River

Label *
Kansas River

Forecast Date
10/01/2019

Model Run Date
09/28/2019

Is Crest *
No

Terrain Information *
NED 10 M

Add Flood Depth

ADD DATA +



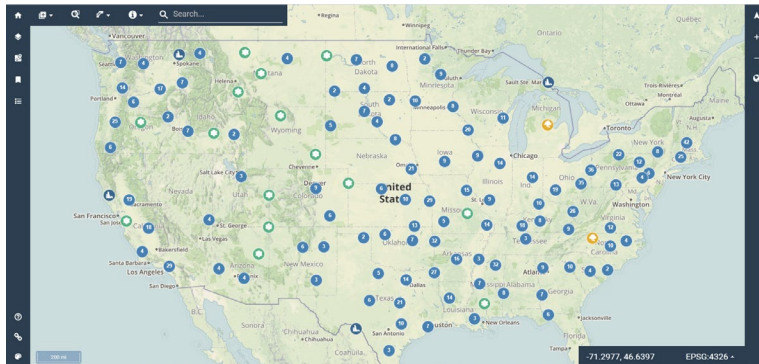
DEMONSTRATION

Publishing

USACE FIM database viewer

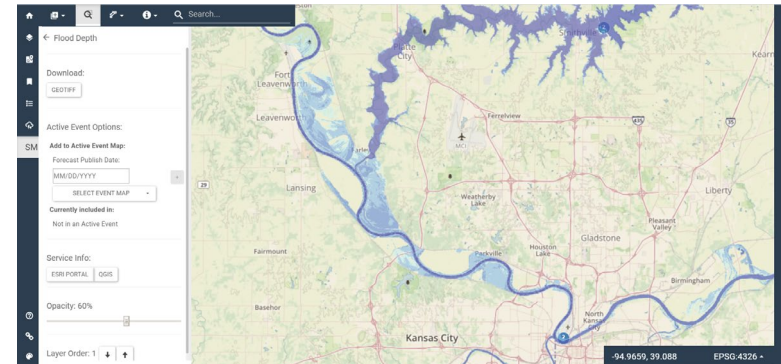
<https://fim.sec.usace.army.mil/viewer/>

USACE access only



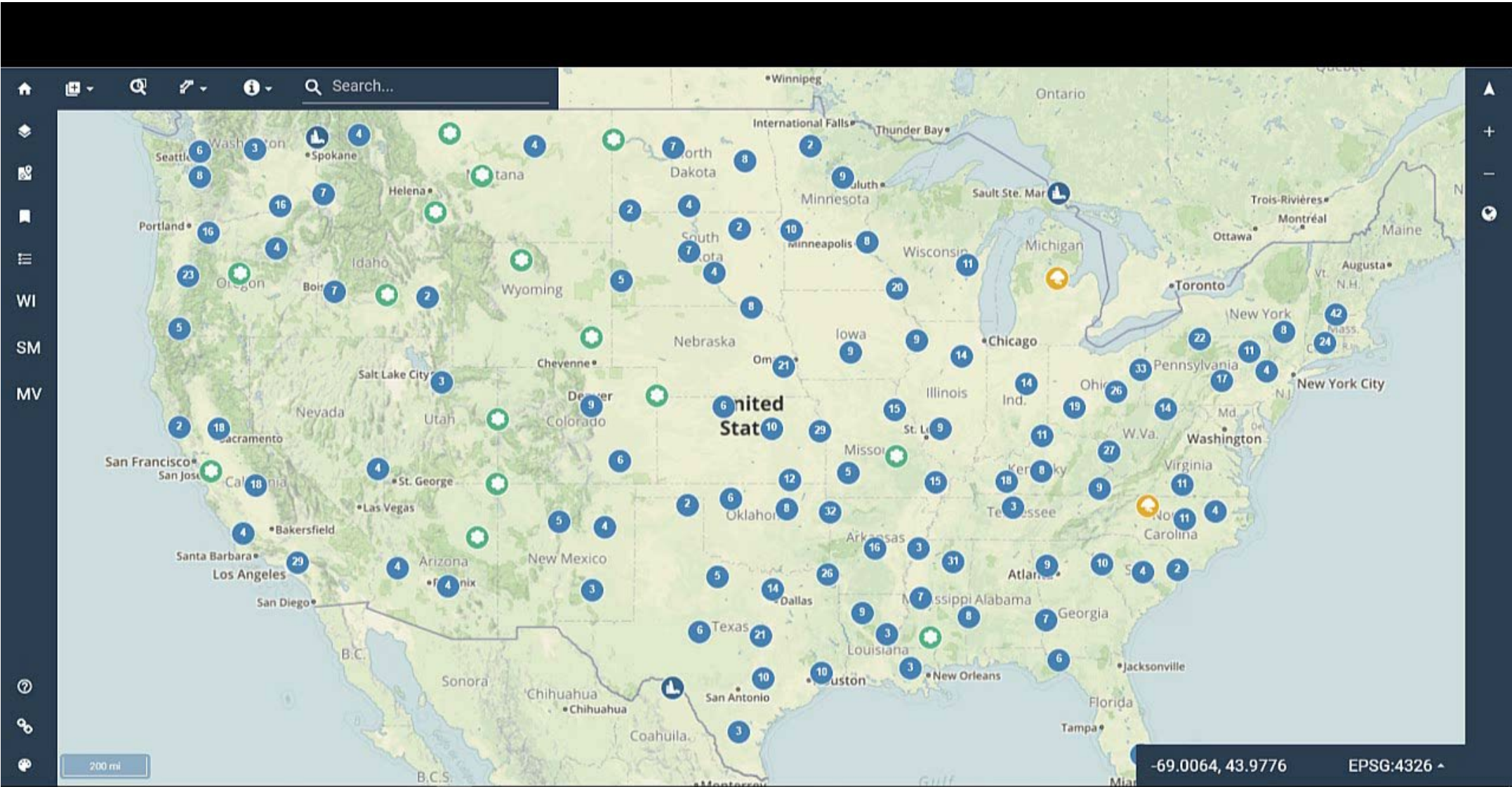
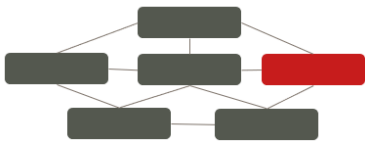
Dissemination

ArcGIS Portal – public flood event viewer



USACE INUNDATION MAP DATABASE VIEWER

Inundation maps accessible upon publishing



ARCGIS PORTAL VIEWER

Example custom viewer for dissemination

