

# Working Together to Reduce Flood Risk: Silver Jackets Interagency Partnerships

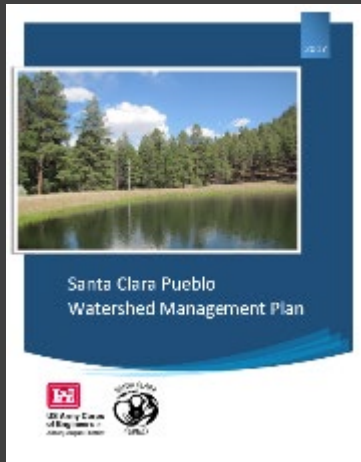
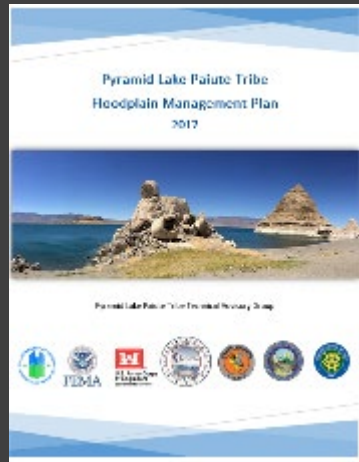
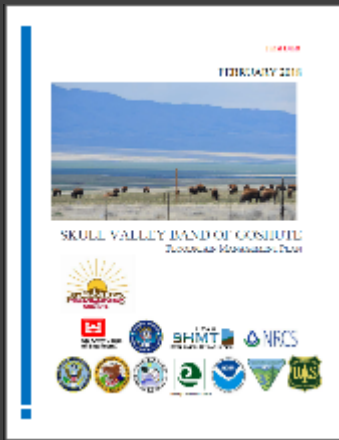
Hunter Merritt, USACE  
Deputy Program Manager  
Silver Jackets Program



# Silver Jackets

- Interagency Program to Reduce Flood Risk
- State Led Teams
- Competitive Project Proposals
- 12-18 month Projects





Preparation  
and Training

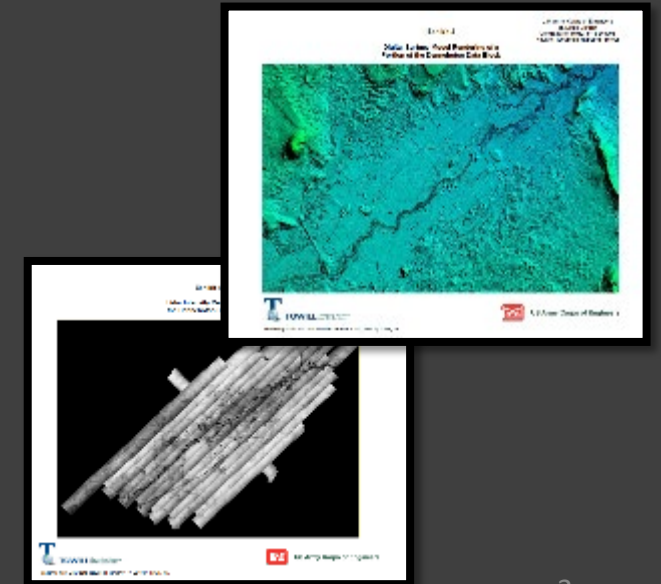


Response

Flood Risk  
Management  
Cycle

Mitigation

Recovery



# COLLABORATION CONTINUUM

FRAGMENTED SERVICES & SECTORS

COEXISTENCE  
Self Reliance

COMMUNICATION  
Shared information

COOPERATION  
shared resources

COORDINATION & COLLABORATION  
shared work

PARTNERSHIP  
shared responsibility

COLLECTIVE IMPACT  
NEW ORGANISATION/ SERVICES  
INTEGRATED ORGANISATION/ SERVICES



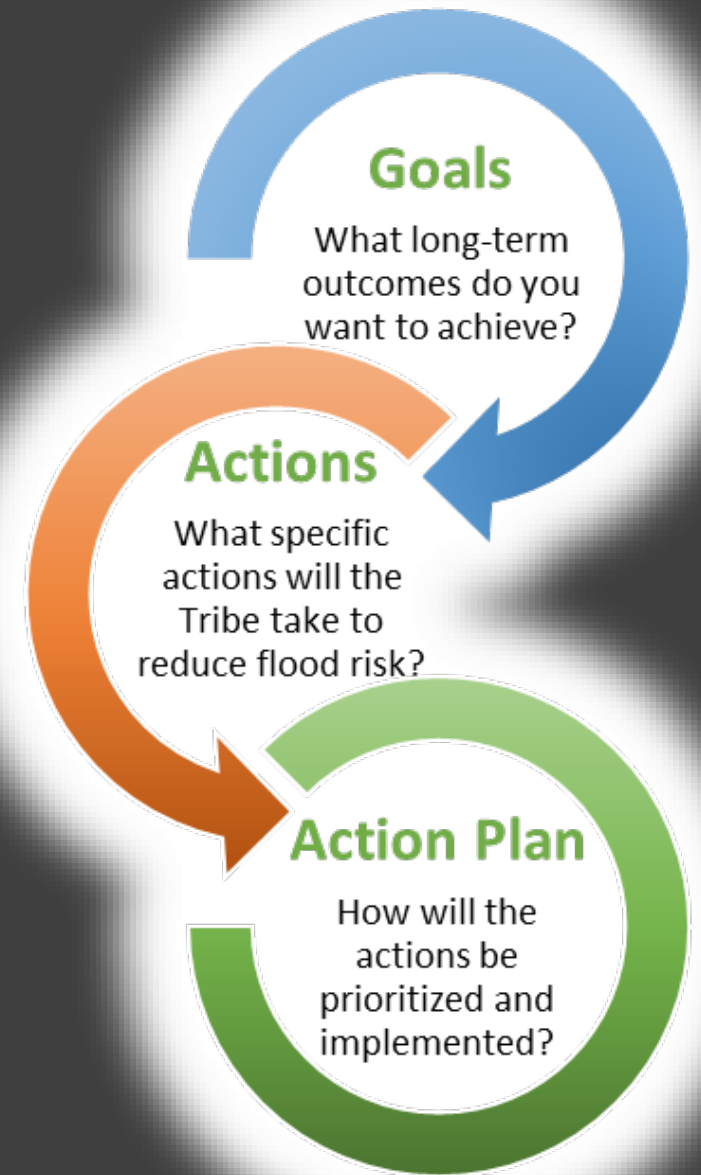
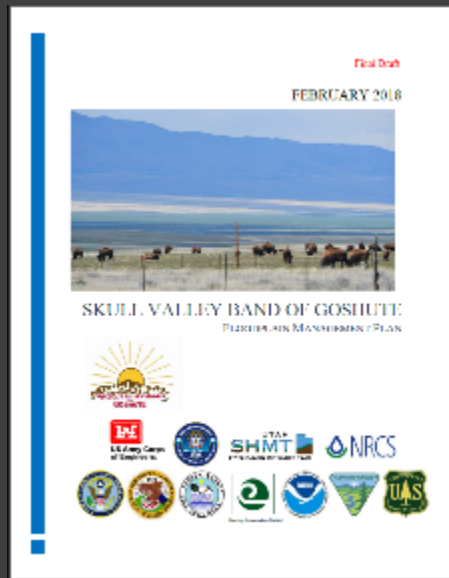
# Developing Partnerships: Skull Valley Goshute *From Coexistence to Communication*

- Fire in the Upper Watershed
- Debris Flows and Flooding
- Support from BIA and NRCS



# Floodplain Management Plans

*Collaboration. Planning. Outreach*



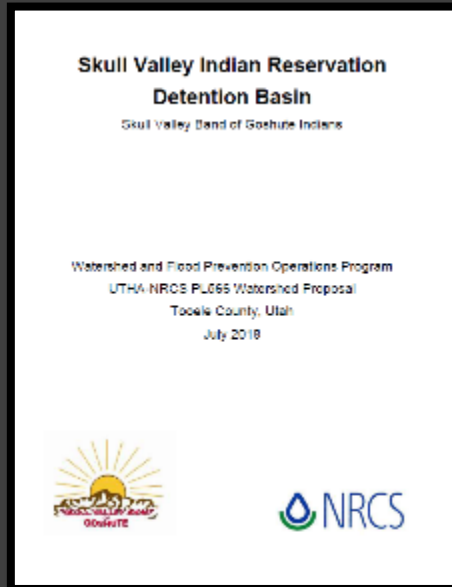


# Developing Partnerships: Skull Valley Goshute *From Communication to Cooperation and Collaboration*

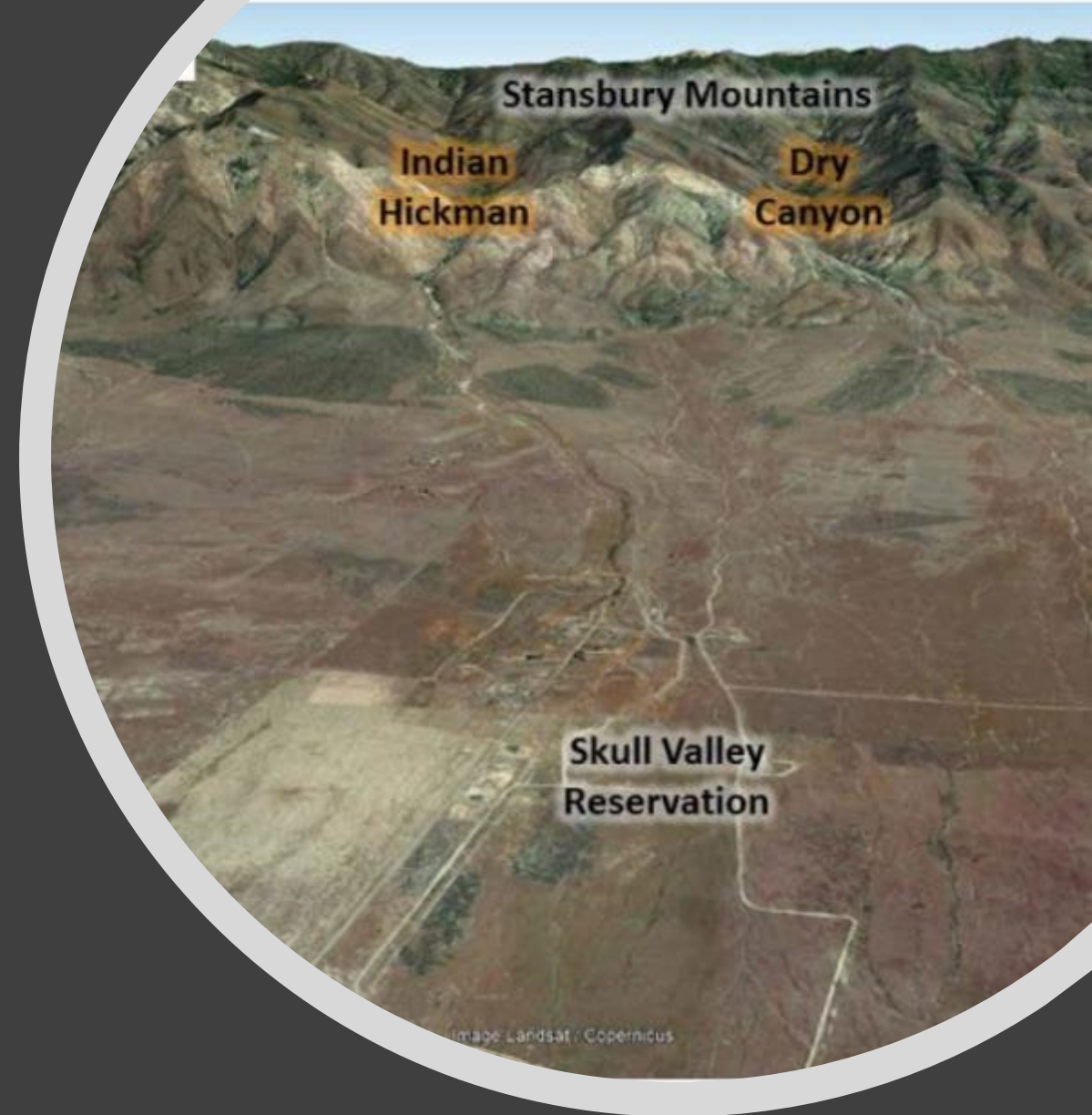
- Developed Silver Jackets Proposal to Develop a Floodplain Management Plan
- Interagency Projects



# Developing Partnerships: Skull Valley Goshute *Ongoing Partnerships*



- Floodplain Mapping
- Tribal Mitigation Plan
- Flood Risk Mitigation Measures





## Tribal Emergency Response and Floodplain Management Workshops

- Opportunity to strengthen partnerships with tribal nations through knowledge exchange and inter-agency collaboration
- Provide information on programs and opportunities on water resources challenges
- Can include site visits and assessments to areas experiencing flooding issues
- Held 5 successful workshops in 2019 in California and Nevada – led to future projects with USACE and other agencies



## Floodplain Mapping and Hazard Assessments

- Prioritize areas of highest risk and prioritize resources
- Conduct floodplain inundation mapping of areas at risk of flooding
- Develop partnerships with agencies with funding opportunities for mitigation projects



# AFTER WILDFIRE

A GUIDE FOR NEW MEXICO COMMUNITIES



**After Wildfire**  
A GUIDE FOR CALIFORNIA COMMUNITIES



- Develop guides for the public and decision makers on what to do before and after a wildfire
- Support hydrologic and hydraulic modeling post-fire
- Develop technical tools to support hydrologic and hydraulic staff responding after a fire

## After Wildfire Support



# EMERGENCY ACTION PLAN

**GUIDEBOOK** • Version 2.0  
August 2016

## Emergency Action Planning Guidebook

- Step-by-step instructions for developing an EAP
- Focused on small and medium sized communities
- Silver Jackets can provide support for communities developing EAPs



## 2018 SPK Emergency Response TTX: Reclamation Districts 2058, 2085, and 2095

### Exercise Overview

The 2018 U.S. Army Corps of Engineers (USACE), Sacramento District and Reclamation Districts 2058, 2085, and 2095 joint Emergency Response Tabletop Exercise is a facilitator/moderator-led event designed to present realistic problems arranged sequentially in a simulated environment. One scenario, with multiple decision point events, will unfold during the simulated time frame. Time, place, and communications during the event are all simulated for the purpose of accelerating the activity to engage in problem solving in a high fidelity environment. This guide will serve as supporting material for the exercise participants.



- Exercise a community's Emergency Response Plan
- Incorporate real life challenges
- Facilitate coordination between stakeholders

# Tabletop Exercises

A Story Map Created by NV Silver Jackets



## Flooding in the Desert: The Lower Virgin River

"I'll tell you that old river, when it runs, it runs about one part water and two parts mud."  
-Tuffy Ruth, Mesquite resident

### Virgin River Watershed

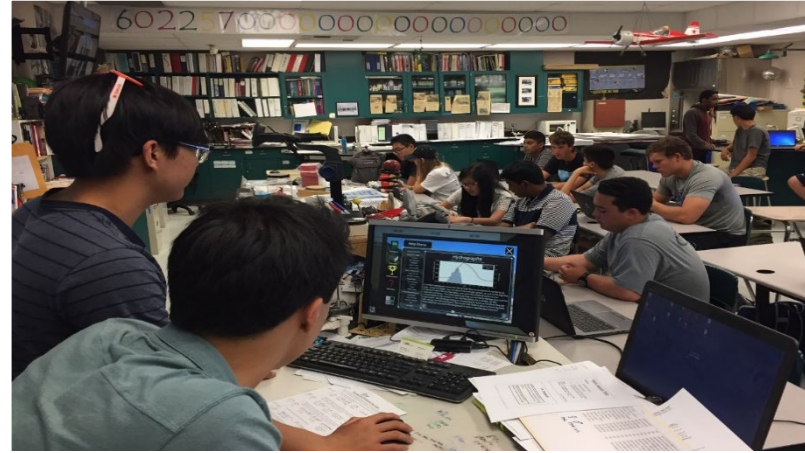
The Virgin River begins in southern Utah, near Zion National Park, where the East Fork Virgin River and North Fork Virgin River come together. The river flows west through St. George, through Virgin River Gorge in the northwest corner of Arizona, into Nevada, and finally flows south to end at Lake Mead.

The three shaded areas on the map are the areas that contribute water to the river—these are known as watersheds. Together they make up the entire Virgin River Watershed. Click on the map to zoom in and explore each watershed! The North Fork and East Fork Virgin River are located in the Upper Virgin Watershed. Fort Pearce Wash drains into the river at the city of St. George, Utah. The area downstream of St. George is the Lower Virgin Watershed.



- Produce ESRI Storymaps
  - Virgin River Flood History
  - <https://arcg.is/1TiCaH>
- Create brochures
- Develop Walking Tours

# Flood History Outreach



## Education and Outreach Events

- Provide booths and watershed or flood models for existing events
- Attend or facilitate school programs
- Host flood outreach events, e.g. a Disaster Movie Marathon, Flood Preparedness Day
- Hold training events for floodplain managers



# Questions

**Melissa Weymiller, USACE**

Melissa.M.Weymiller@usace.army.mil

(916)557-5281